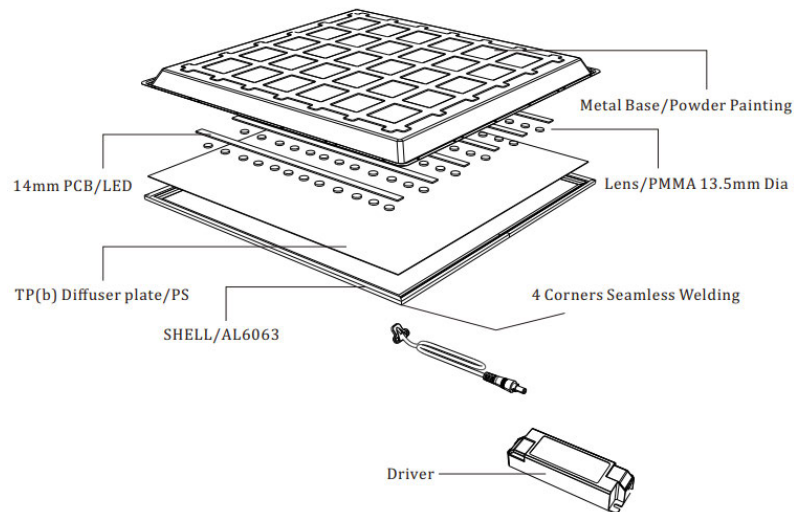
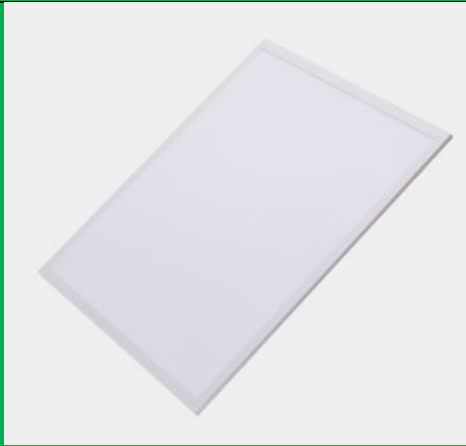


PANELLIGHTS

TPB FIRE RATED CCT / IP44 / CRI90 / BACKLIT



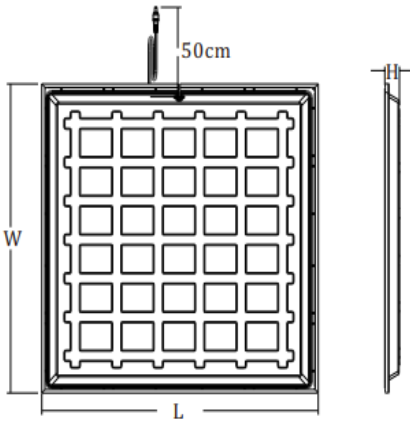
TPB240CCT	TPB 40W 4000 LM 35-40v 960ma 3/4/6.5 K-K F/Free RA80 PF90 5yr 595x595mm
TPB460CCT	TPB 60W 6000lm 35-40v 1500ma 3/4/6.5 K-K F/Free RA80 PF90 5yr 595x 1195mm

- TP(b) Fire Rated Materials
- CCT Switchable colours 3000K / 4000K / 6500K
- CRI90 Ultra smooth even Light Distribution, precise optical PMMA lensed diffuser
- Supplied with 40W / 60W Flicker Free, efficient PF>0.90 Prewired Power Driver
- White powder painting Treatment, Metal Plate 0.32mm T anti corrosive, 92% Reflective rate
- Solid non-Bending materials
- 13.5mm Diameter PMMA Lens, 14mm x 0.8mm PCB, Low voltage drop, High Heat dissipation
- 5 Year Warranty. 50000hr
- 220V-240V
- 50CM Connector cable
- Photometric / IES Data
- View / Beam Angle 120° CRI 90 UGR19
- UKCA / TP(b) Approved
- Recessed or Suspension Mountings
- High Quality components designed for commercial use

TECHNICAL DATA

Product Code	Material	Body Colour	Voltage	Wattage	Lumens	IP Rating	Barcode (EAN)
TPB240CCT	TPB	White	220-240V	40W	4000lm	IP44	5060306474351
TPB460CCT	TPB	White	220-240V	60W	6000lm	IP44	5060306474320

CCT Colour Output: 3000K / 4000K / 6500K



Dimension	Location	TPB240CCT	TPB460CCT
Length	L	595	1195
Width	W	595	595
Height	H	30	30

INSTALLATION AND WIRING INSTRUCTIONS

A qualified electrician is required to install make connections to LED Backlit Panel Light. The following instructions should be read carefully before commencing installation. Failure to implement procedure below will invalidate the warranty.

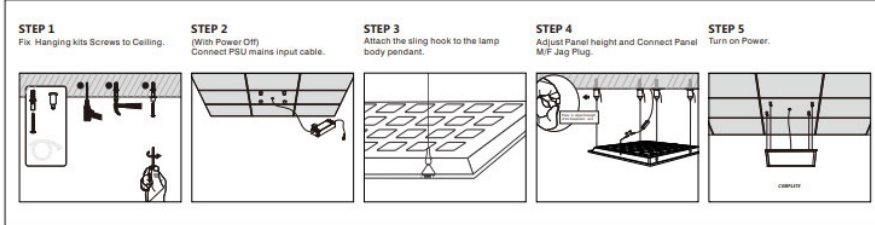
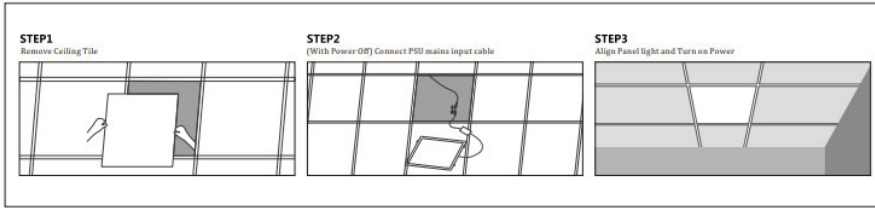
General Notes

- Ensure 220-240V supply Voltage
- This unit must be installed by a professional Electrician
- Switch off supply before servicing
- The Panel light is an Extra Low Voltage (ELV) Unit. It requires an ELV power supply unit (PSU) to operate. Mains must only connect to the PSU.
- For safety reason this unit must not be modified in any form. This may also invalidate the warranty.
- Power drivers must not be placed directly on top of Panel Light.
- IP44Rated Cleaning: Non-Chemical, using wrenched damp piece of cloth.



- PSU Input:220-240V (non-dimmable) 50/60Hz Max 0.3A Non Flicker
- CRI80 PF>0.9 120+10° View Angle
- Output:25V-40V 40W /60W 55V(max) 960ma Constant Current Input
- Cable Length: 500mm
- PSU AC wires 2x0.75mm² 12cm length, DC wires 2x0.5mm² 12cm length

Installation Notes



Panel Light Accessories

Panel Light Accessories			
		PNL-EM2	3 HR Emergency KIT 60W Max 343 x 102 x 40mm 3gr. Made in UK
		PNLSM2	SURFACE MOUNT KIT Aluminium White 601*601*40mm.
		PNLSM4	SURFACE MOUNT KIT FOR 1200x600 PANELLIGHTS 1195*595*40mm.
		PNLSK	Panellights Suspension Kit 4x Adj 1.15M Sets
		DL-BTKIT	2X1mM SUSPension KIT Diam:15mm base to ceiling/ 8mm base
Panel lights SPARES			
		CC45M2	170-265V CC 45w 28V-42V 55V MAX 950MA PF >0.9 IP20 14x4x3cm
		CC60M2	170-265V CC 60w 28V-42V 55V MAX 950MA PF >0.9 IP20 14x4x3cm
	FD Range	M2FLD	PSU Output Male to Female Converter Lead 13CM (L)

PACKAGING INFORMATION



Individual				Outer Carton	
Product Code	Qty / Carton	Weight	Dimensions	Weight	Dimensions
TPB240CCT	8pcs	/	No Inner Box	14.5kg	65 x 30 x 65 cm
TPB460CCT	4pcs	/	No Inner Box	18.9kg	1250 x 20 x 65 cm



SUSPENSION KIT FOR LED BATTENS



Kits	
DL-BTKIT	2x 1 Meter Suspension Kit Diameter: 15mm base to ceiling/ 8mm base
PNLSK	Panellights Suspension Kit 4x Adjustable 1.15M Sets
PNLEM2	3 Hours Maintained Emergency Kit

Installation & Operating Instructions



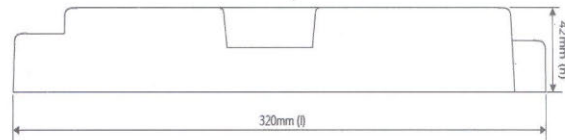
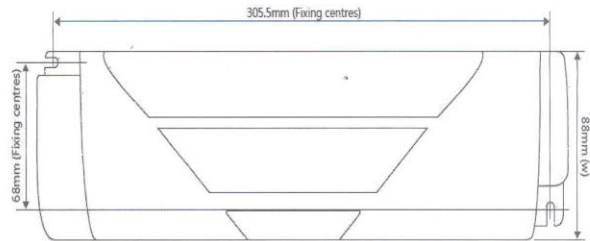
Universal Remote Emergency Pack

For use with LED Modules only

Product Specification

- Mains voltage:	230V +/- 10%
- Mains frequency:	50 - 60Hz
- Power Consumption (Excluding external Driver):	4VA
- 2 x user-serviceable internal fuses:	'T' 2A 5x20mm (See product label)
- Emergency output voltage range:	(See product label)
- Emergency Duration:	(See product label)
- Battery:	+5°C to +35°C
- Ambient temperature range:	0.5-4mm ²
- Min/Max Conductor sizes:	0.7kg
- Weight	24 hours
- Charging time:	1
- Protection class:	IP20
- Degree of protection:	UL94 V0 Polycarbonate
- Material:	BS EN 61347-2-7/2-13
- Em module complies with:	
- Suitable for installation to EN50172 and BS7671	

NOTE – To comply with regulations, installation must be carried out by a suitably qualified, competent person and in accordance with the current IEE wiring regulations (BS7671) and building regulations. The emergency pack requires 2 live feeds, a permanent supply for charging the battery pack and 1 for switching the lamp on and off .



The unit provides reinforced insulation between the mains supply and battery charging circuit and employs self-resetting protection against short-circuit of battery terminals. Normal charging will resume automatically once a fault is removed.

Emergency Lighting 'standard' or 'manual' Test

The following minimum inspections and tests should be carried out:

Monthly

Switch off the mains power supply to the lighting unit. Inspect all emergency lights for satisfactory operation. Any defects should be noted and actioned by a competent person as soon as possible.

Yearly

Switch off the mains power supply to the lighting unit. Leave the unit to run for the rated period (e.g. three hours). The lights should remain operable from the battery for the whole period.

Please be aware that further inspection / testing may be required, e.g. by risk assessment / local legislation.

Batteries and Disposal

The internal battery has a design life of 4 years and must be replaced in a timely manner to ensure the integrity of the emergency lighting system is maintained. In any case, the battery should be replaced when it no longer provides the rated duration (3 hours).

The manufacturer of the enclosure is committed to fulfil its obligations as a producer of batteries used in emergency lighting applications. End-of-life batteries may be returned to the remote enclosure manufacturer at the customers cost and arrangements will be made to ensure their correct disposal. Alternatively, they may returned directly to an authorized treatment facility at the customer's cost.

Features

- > For use with LED panels, arrays or down lights of compatible voltage.
- > External battery connector for simple isolation
- > 3-pole isolation of lamp & mains driver power during emergency
- > Contains replaceable 4Ah Nickel Cadmium (NiCd) or 4Ah Nickel Metal Hydride (NiMH) battery (See product label)
- > Emergency output power (Typical) : 3W (3-cell) and 4W (4-cell)
- > 1 or 3-hour autonomy (See product label)
- > Battery connectors are polarity protected

Installation

Ensure the mains supply is isolated before attempting installation!

Please refer to page 2 of this leaflet for mains supply, driver and lamp connections. Once wiring is complete, use both internal cable clamps to secure cables in place. To prevent unauthorised access, ensure the lid is fixed in place using the screw on the base. If external plug and socket connectors are used without means to prevent accidental disconnection, the remote box should be sited so that it is protected from unauthorised disconnection.

A recessed mount can be found inside the packaging carton to assist installation of the indicator LED. A 14-16mm hole should be drilled in the required location so it is visible during normal use.

Once installed, the indicator LED will be illuminated and the supply should be left undisturbed for a minimum of 24 hours to charge the batteries before attempting a commissioning test. After a successful test, the date should be noted on the space provided on the battery.

Standard / single colour (green) shows the following condition:

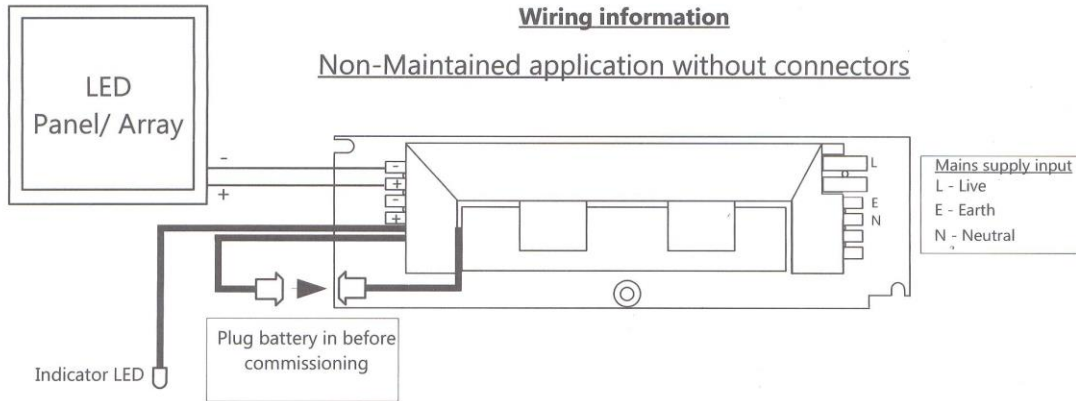
A green LED shows the following conditions:

- LED green: mains OK and battery connected
- LED off: Mains failure [below 160V], battery disconnected/ battery faulty or faulty unit.

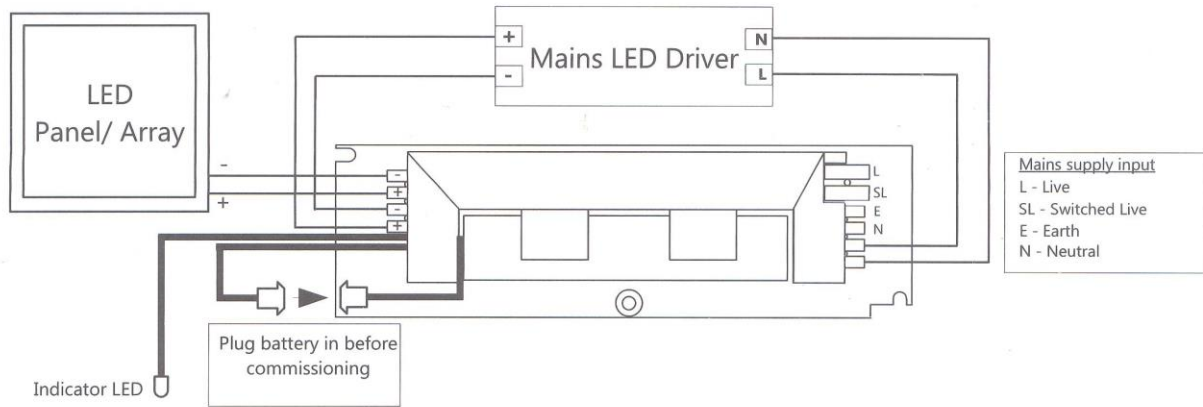
Installation & Operating Instructions

Wiring information

Non-Maintained application without connectors



Maintained application without connectors



Maintained application with connectors

